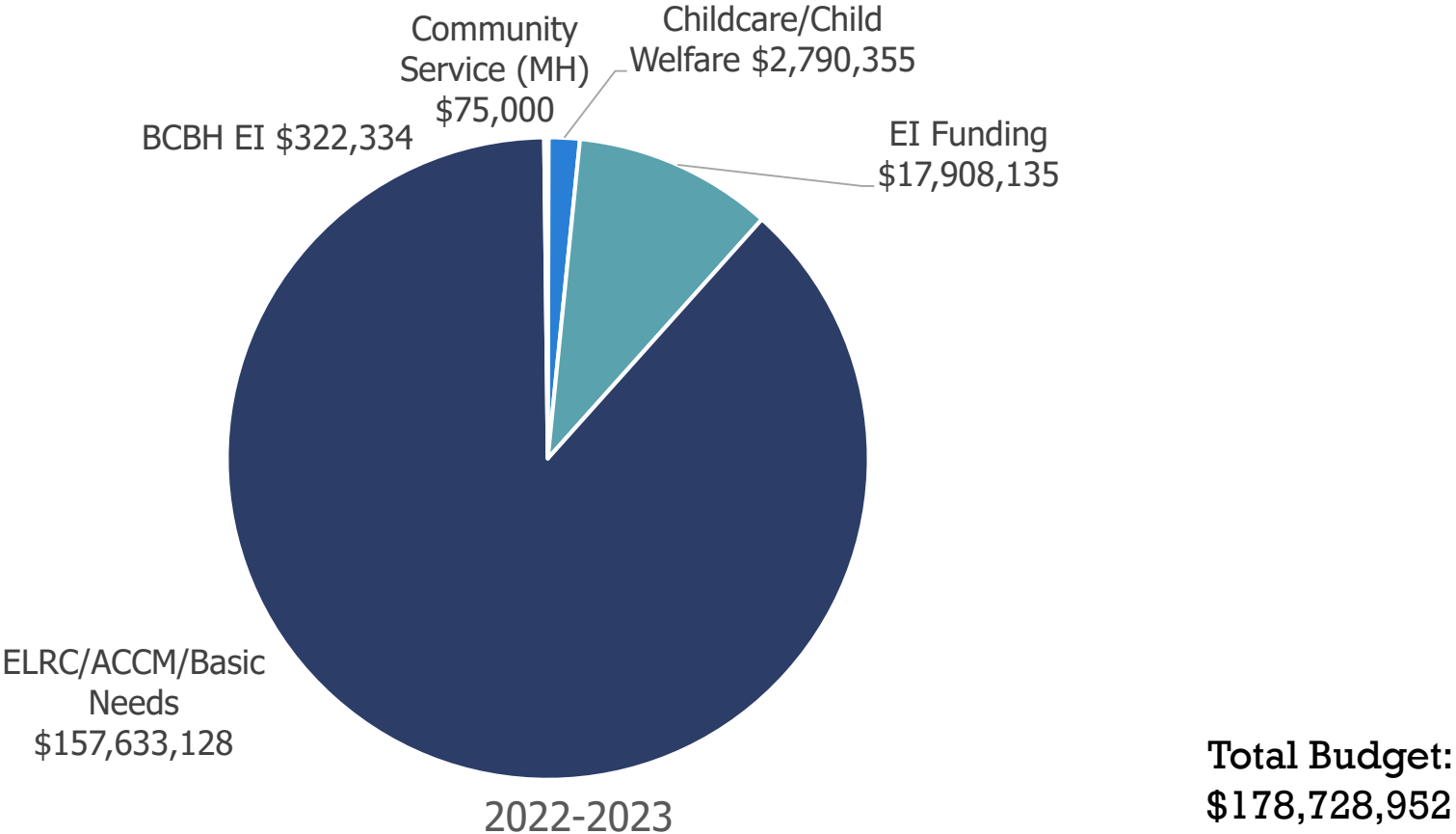


Annual Report 2022-2023

THE ALLIANCE FOR INFANTS AND TODDLERS, INC.

The Alliance Budget Snapshot



Renewed Focus in 2022-2023



Updated Mission Statement

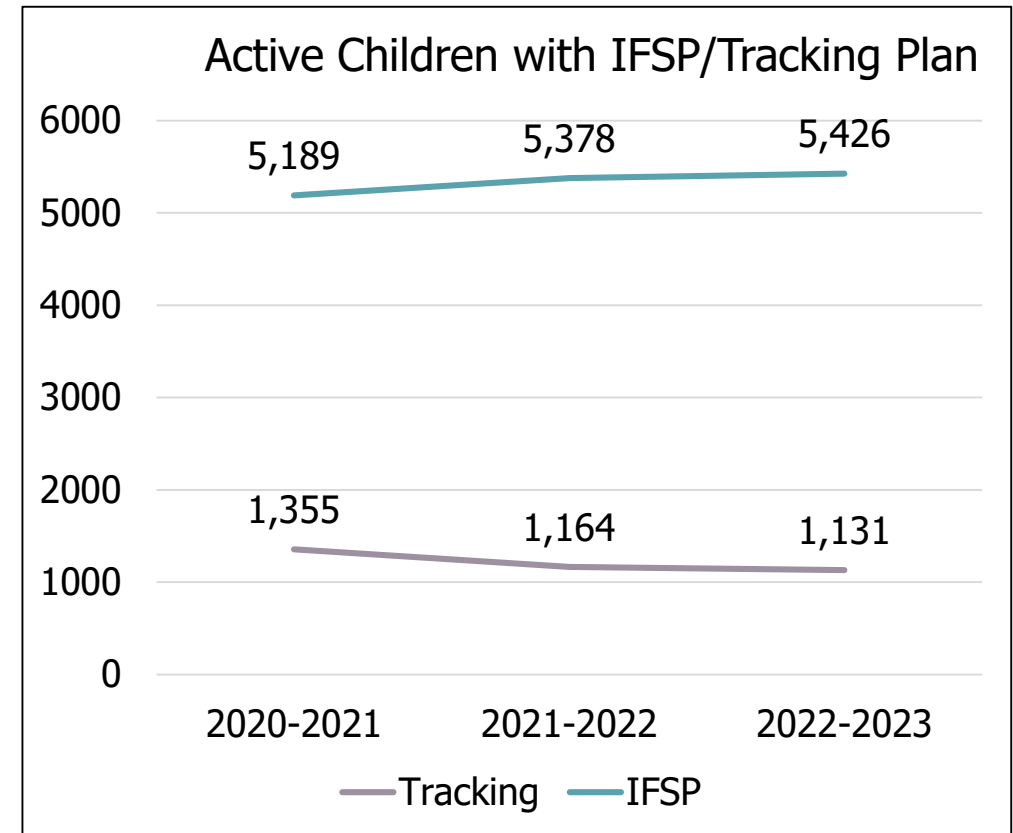
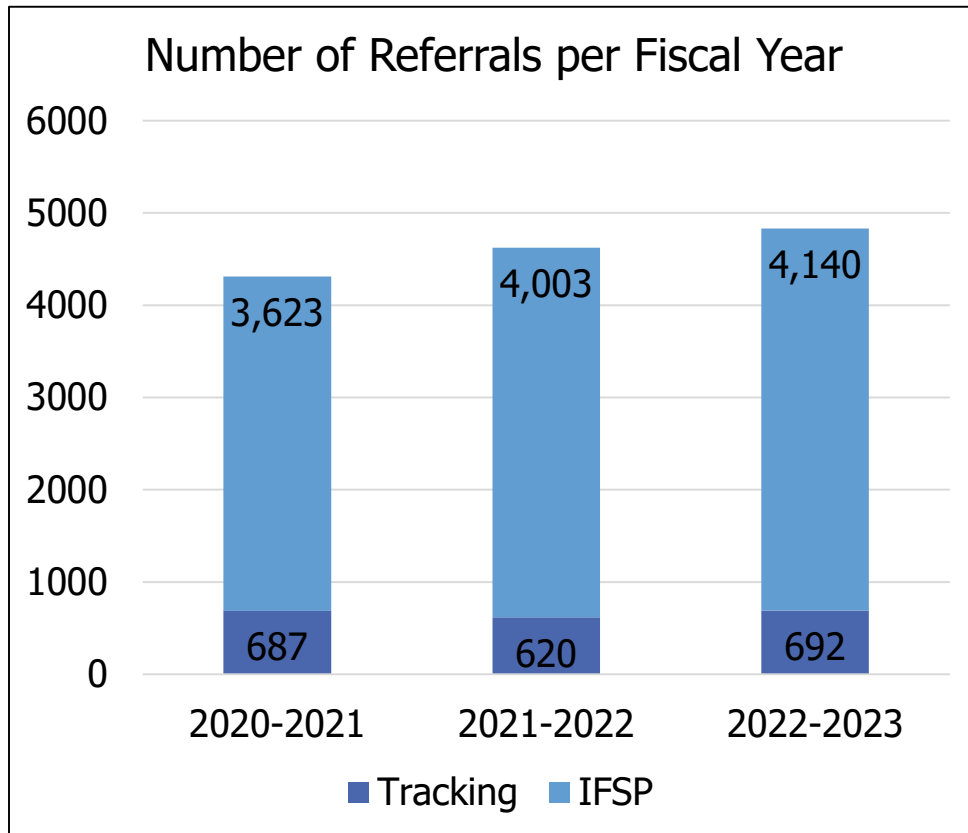
Connecting young children and their families with the developmental supports needed to thrive through family engagement and collaboration with community partners.

Updated Vision Statement

We envision a future where all children and their families are valued, respected and included as members of the community.

Connections

Our referrals have increased by 12% since 2020-2021. This is a result of our Child Welfare Program expansions, increased presence in the community after COVID, and our continued collaboration with pediatricians and birth hospitals throughout the county. There were 5,227 evaluations and added assessments in 2022-2023.



What families are saying...

28.4 % of families actively receiving IFSP services as of February 1st, 2023 had the following responses to the Family Survey regarding their Early Intervention team:

99.34% - Built on my child's strengths and interests

99.74% - Worked with my family to develop ideas and strategies to help my child learn

97.57% - Provided me with resources to further my knowledge of my child's unique needs

98.36% - Made me feel part of the IFSP/IEP decision-making process



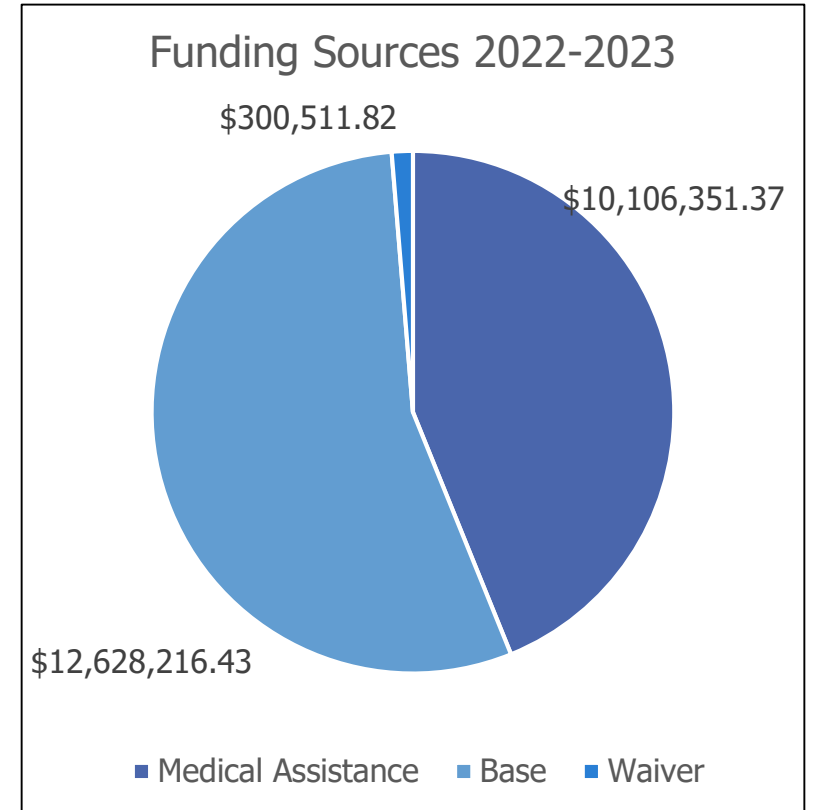
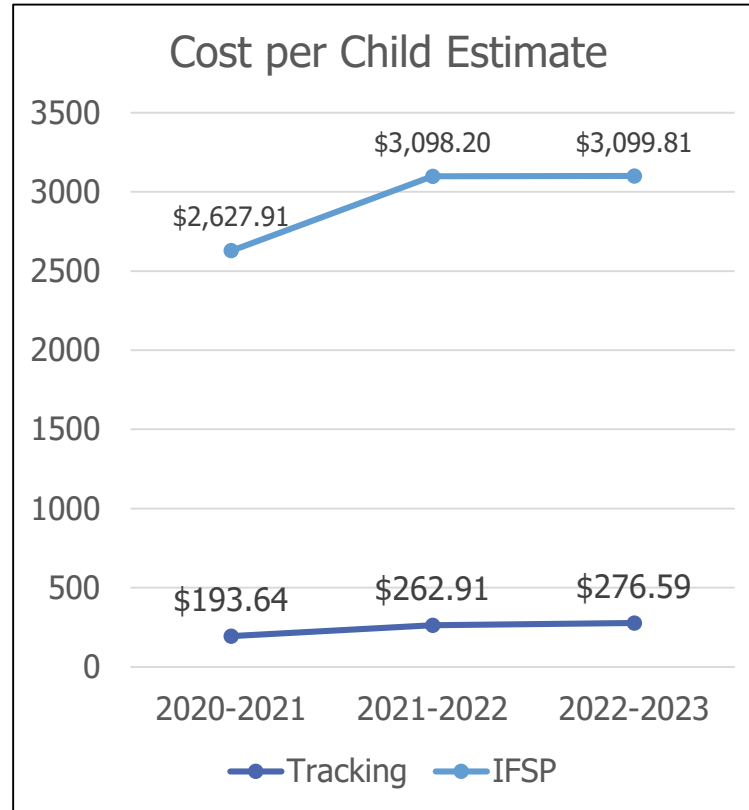
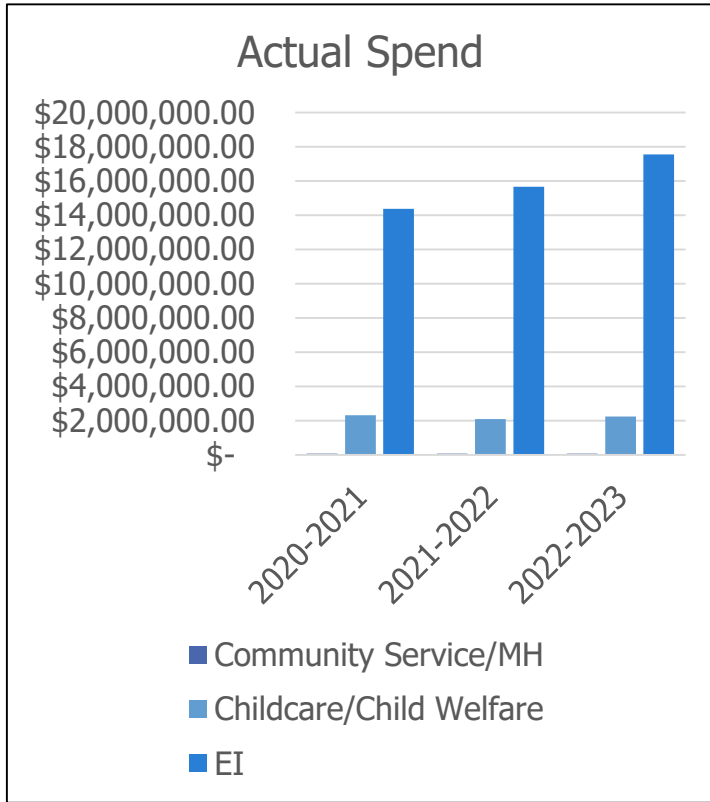
In Our Community

- Refreshed our logo
- Increased our presence on LinkedIn to appeal to more candidates
- Updated our email signatures to include Facebook, Instagram, and LinkedIn
- Screened a total of 148 children in childcare centers



- Presented to local community agencies and vendor tables at family focused events
- Family Support Coordinator was nominated as the new co-chair for the Local Interagency Coordinating Council for Pittsburgh/Allegheny County EI

Fiscal Data



Staff Recognition 2020-2023

34 staff celebrated 1 year

14 staff celebrated 5 years

7 staff celebrated 10 years

8 staff celebrated 15 years

6 staff celebrated 20 years

10 staff celebrated 25 years

1 staff celebrated 30 years and their retirement!



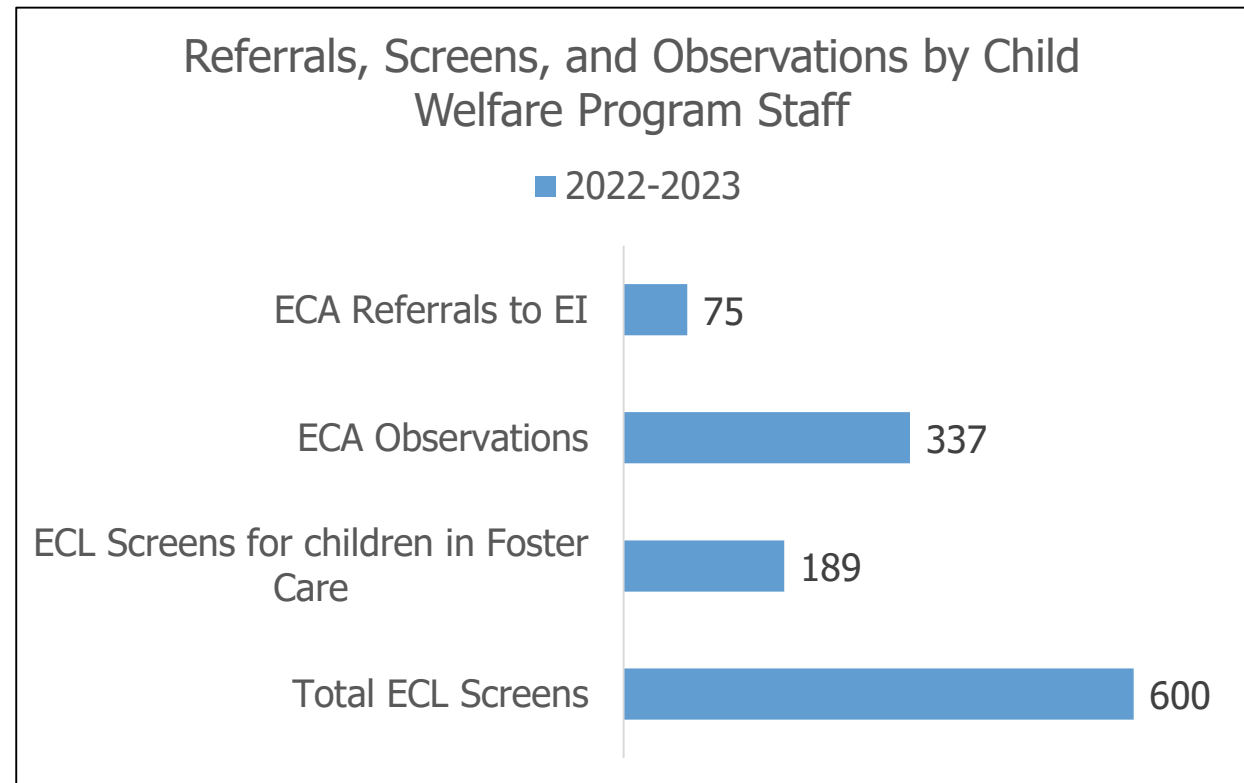
Child Welfare Program

Early Childhood Assessors (ECAs) – complete observations on children who are in the investigative stage with CYF

Early Childhood Liaisons (ECLs) – complete developmental screens on children who are accepted for services with CYF

Investigative referrals continue to increase as we build rapport with caseworkers

Child Welfare Program staff are available to support Service Coordinators in collaboration with CYF



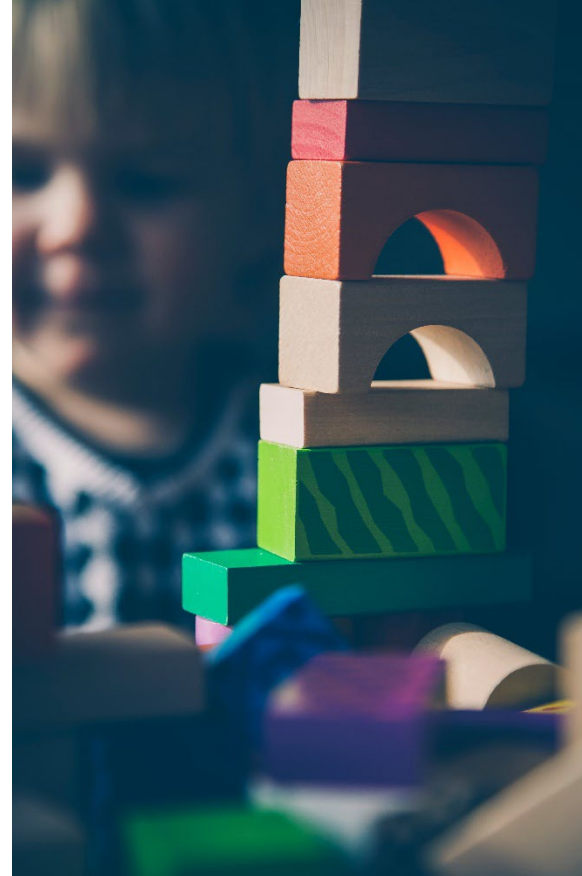
Updates

- Batelle Developmental Inventory - Third Edition
- New EI OCDEL Advisor Jennifer Pusateri
- New EITA Kelly Fisher
- 11 Early Intervention Providers

Professional Development

- Writing High Quality IFSP Outcomes Training
- Ethics and Boundaries in Home Visiting
- Prevent-Teach-Reinforce for Young Children
- Infant Toddler Early Intervention Policy

Forum 2022 – EI Service Delivery: Coaching Across Settings

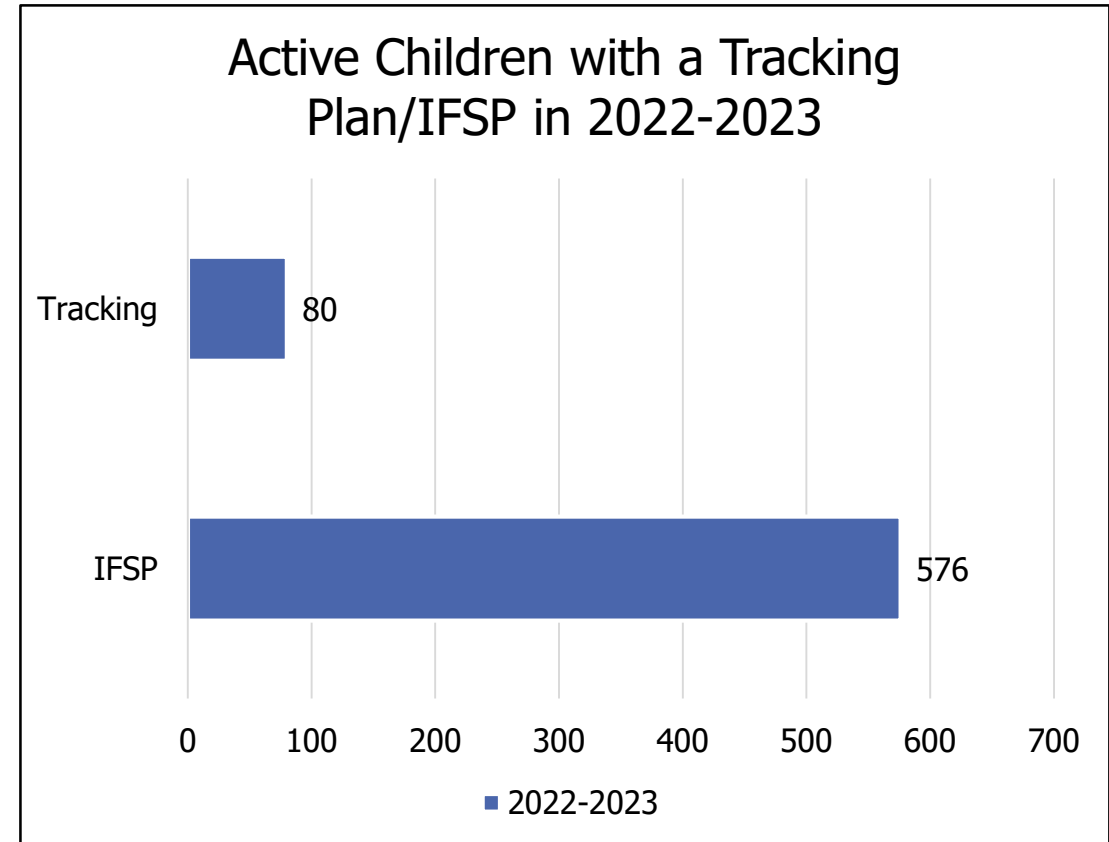


Beaver County Early Intervention Service Coordination

In 2022-2023 fiscal year, five service coordinators and one supervisor provided Service Coordination to families in Beaver County

One focus for service coordinators, during the fiscal year, was to increase revenue through increased productivity

Our team navigated switching from program-funding to fee for service mid-year. The impact was a potential loss of \$125K, however, we ended the year with a final amount of -\$51K, which was funded by Beaver County



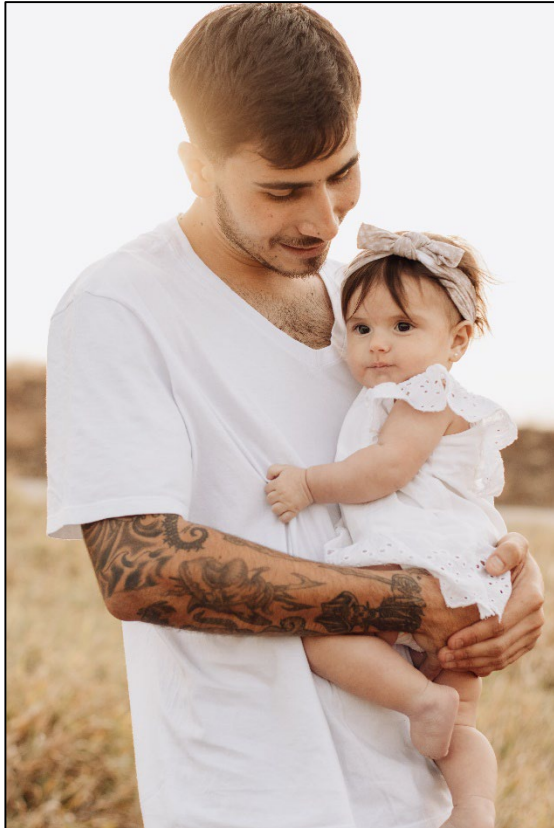
System Stressors

- Unclaimed Services
- Staffing and training new staff
- Supervisors carrying a case load
- Caseload size

However...



The future is looking bright!



- Supporting Beaver County sustainability
- Continuing to find efficiencies and automation opportunities in all work processes
- Creating and implementing a new referral option for families entering EI
- Participating in a rate study being completed by OCDEL
- Becoming more active within our LICC
- Updating our Values statements

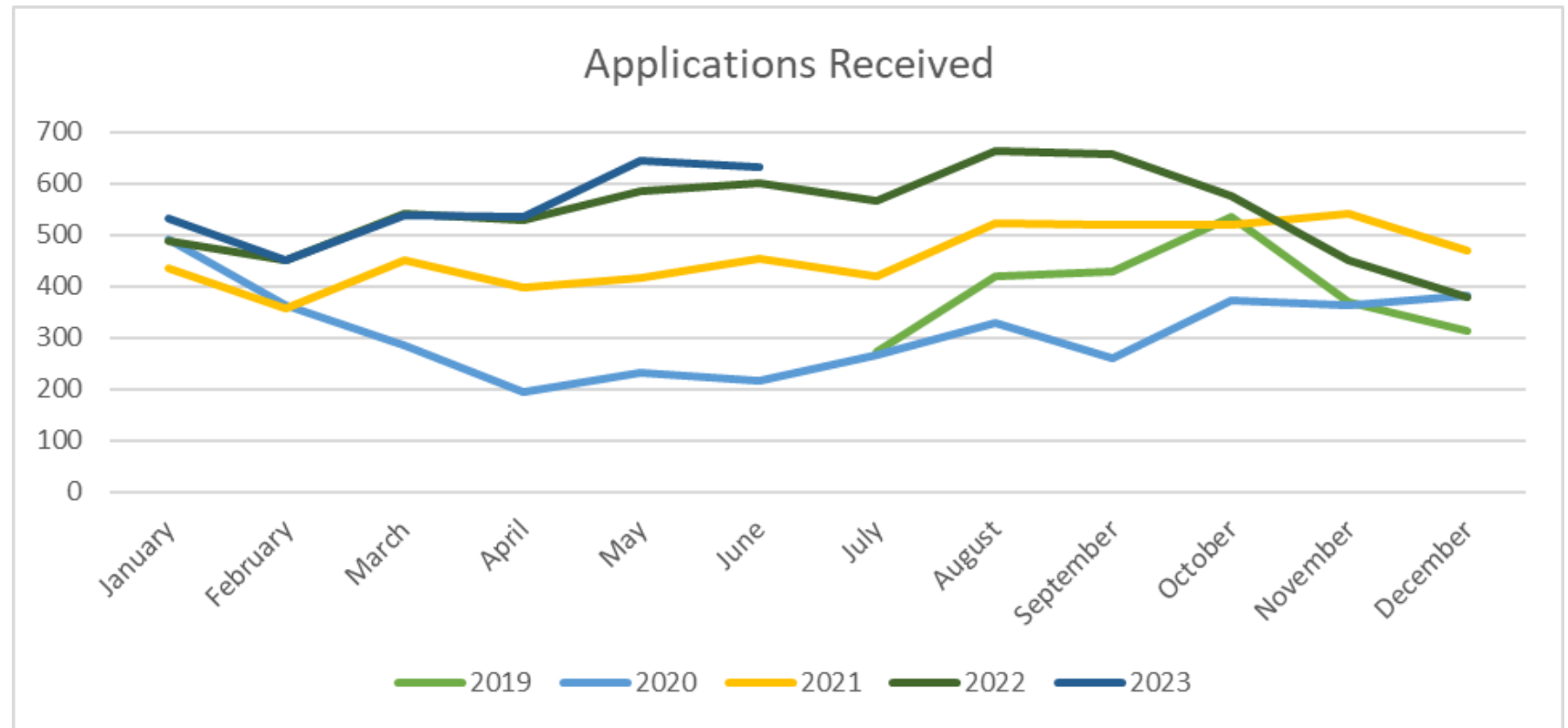
The Early Learning Resource Center - Region 5

Vision Statement:

The ELRC provides a single access point for families, early learning service providers and communities to gain information and access services that support children and families with the ultimate goal of improving the quality, accessibility, and affordability of early learning services in Allegheny County.

Child Care Subsidy Applications

- Applications for Child Care Subsidy reached a high this May with nearly 650 received
- Each year has more applications than the previous year and 2023 is trending the same
- Enrollment reached it's highest peak in 2022-2023 with 10,106 children enrolled in child care subsidy



Child Care Providers

As of June 2023, 517 Relative providers are open and are serving 1,131 children in their care - this is on average 75 more relative providers monthly than last year

611 Licensed providers are open with a capacity of around 39,000 children

Total capacity across Allegheny County has risen since the start of the pandemic even though the number of providers have decreased



Family Resources

- ❖ Infant Formula Bank – Opened July 2023!

The main office of the ELRC Region 5 in downtown Pittsburgh will be an infant formula bank location of the Greater Pittsburgh Infant Formula Bank. A baby can receive up to 12 cans of formula or the liquid (RTF) equivalent in his/her first year.

- ❖ Diapers Available for Families

The ELRC Region 5's main office in downtown Pittsburgh is now a Diaper Bank location in Allegheny County. Emergency diapers and wipes are available. Families can receive up to 50 diapers and two packs of wipes per month.

- ❖ Evening Phone Hours

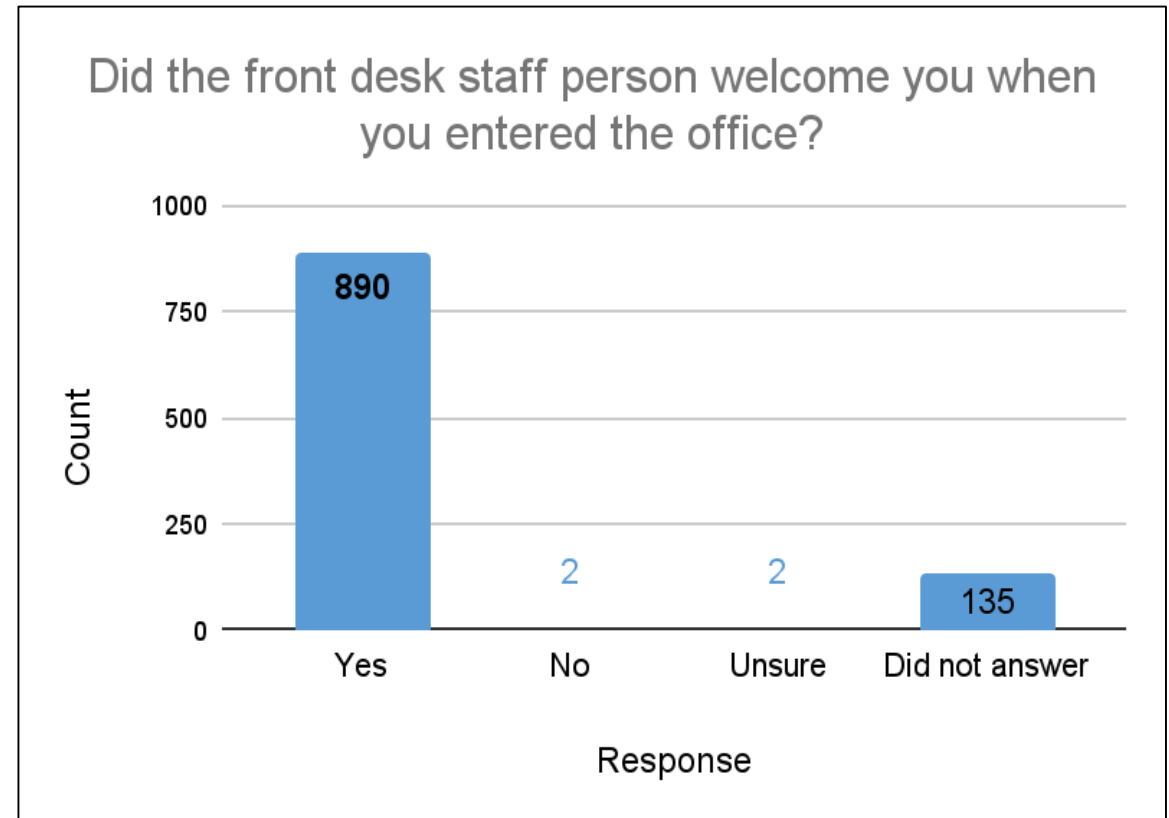
ELRC Region 5 is currently offering Tuesday evening phone hours from 5 to 7 p.m. to support families and providers.

ELRC Wood St. Experience Survey

Given to visitors as part of their paperwork, 1,030 surveys have been collected in this past fiscal year (vs. 274 in FY22)

In December 2022, the survey was updated with additional questions, simplified response options, and a QR code

90.49% of visitors report being provided with the best available resources in 2022-2023



Challenges and Action Steps

Challenges:

43 staff members, 23 being Family Specialists, left the company during 2022-2023

- 21 staff members resigned during their first 6 months of employment
- 16 staff members did not give two weeks' notice

46,102 documents needed to be uploaded into PELICAN by June 30, 2023



Actions Taken:

Restructuring of workload and training new staff

Supervisors carrying a caseload

Clerical, fiscal, and Alliance admin staff worked diligently to enter these documents by the deadline

Fiscal Data

The fiscal team spent A LOT OF time processing A LOT OF payments!

The highlights include:

- 13,120 invoices and adjustments processed
- \$72,729,431 paid to providers for CCW
- \$14,482,011 paid to 791 providers in grant funding, paid over several grants with multiple payments

Goals for 2023-2024

To employ a full staff of IFSP Service Coordinators to normalize their caseload size to allow them to provide a high level of support and build meaningful relationships with EI families.

To review administrative components of the agency assigned to Operations to identify efficiencies and staff training needs, leading to updated process manuals and policies/procedures.

To improve our implementation of testing tools and increase capacity for evaluations and assessments to address the needs of children throughout our community.

To enhance our relationships with the communities we serve through outreach, partnerships, and engagement that supports individual and agency relationships so that families, who are interested know about us, and the children who may be eligible, are referred to us.

To engage and grow our team as we work to fulfill the vision of the ELRC so that we can continue our work with families and providers for another 5 years of service.